

OWNER'S MANUAL

WI-FI INSTRUCTIONS 



Please read this owner's manual carefully and thoroughly before operating the unit!
Take care of this manual for future reference.

CONTENTS

Introduction to WI-FI functions 1

Download and install the control software 2

Reset AC WI-FI module 4

Smartphone ,pad or other mobile terminals connect to WI-FI or hotspot 4

Configure the Devices 5

Manage the Devices 6

Others 7

Appendix A: <<Config failed check items>> 7

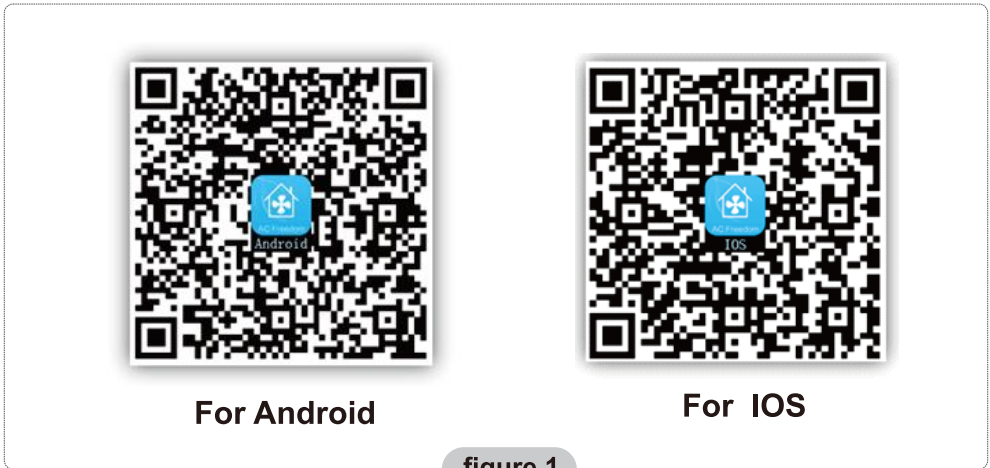
Introduction to WI-FI Functions

The AC system is equipped with remote control technology, with the WI-FI module inside the machine connected to the display panel and the command to run the AC transmitted. The AC system is in constant connection with a wireless router or access point attached to the Internet. Mobile terminals such as smart phones and tablet computers, on which special control software are installed and WI-FI modules successfully configured locally, can be used as remote controllers once they are connected to the Internet.

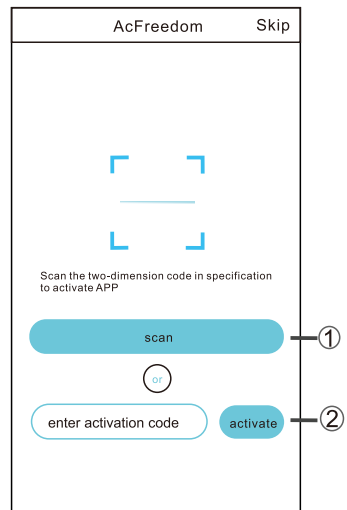
Download and install the control software

The control software can be downloaded and installed as follows.

1. For mobile terminals such as smart phones and tablet (Android 4.1 and iOS 6.0 or above only), search and download “AC Freedom” from Google Play or App store on and install it on your system.
2. You may also use your mobile terminal (Android 4.1 and iOS 6.0 or above only) to scan the “QR code” (see Fig.1) with a third party scan tool, which will automatically direct you to the download interface of AC Freedom for you to download and install the software.



Once the control software is installed, enter the “Scanning Interface”(for downloading the Welcome Page).There are two types of log-ons contained in the Scanning Interface(See Fig.2):



Download and install the control software

1. By clicking “scan” and scanning the QR code on the right .(See Fig.3)

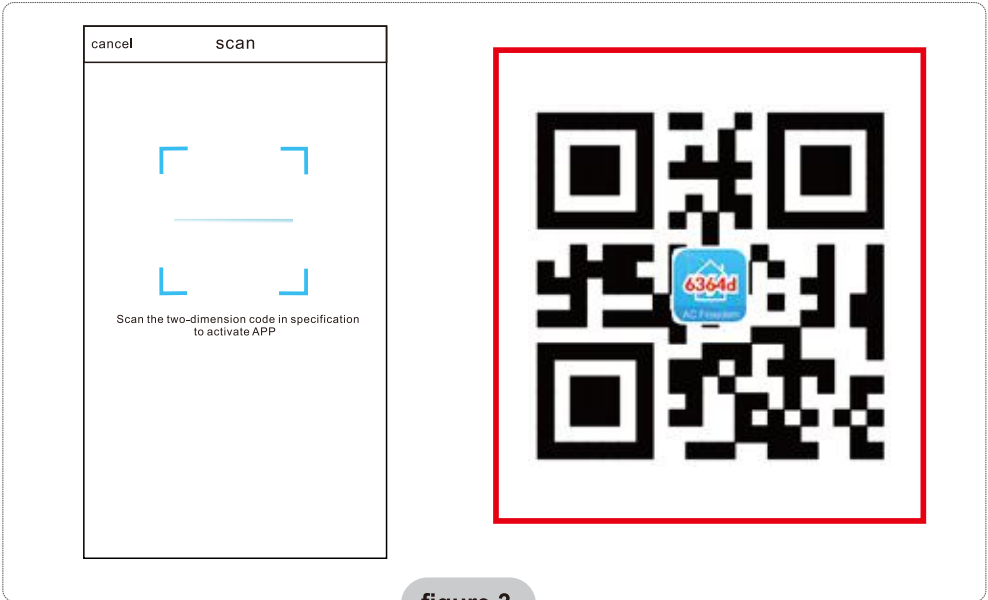


figure 3

2. By entering the activation code (6364d) in the area prompted by “enter activation code” (see fig.4)

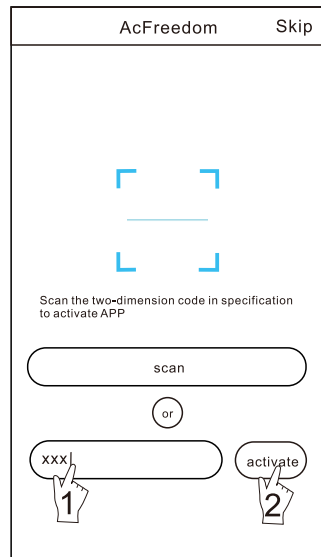


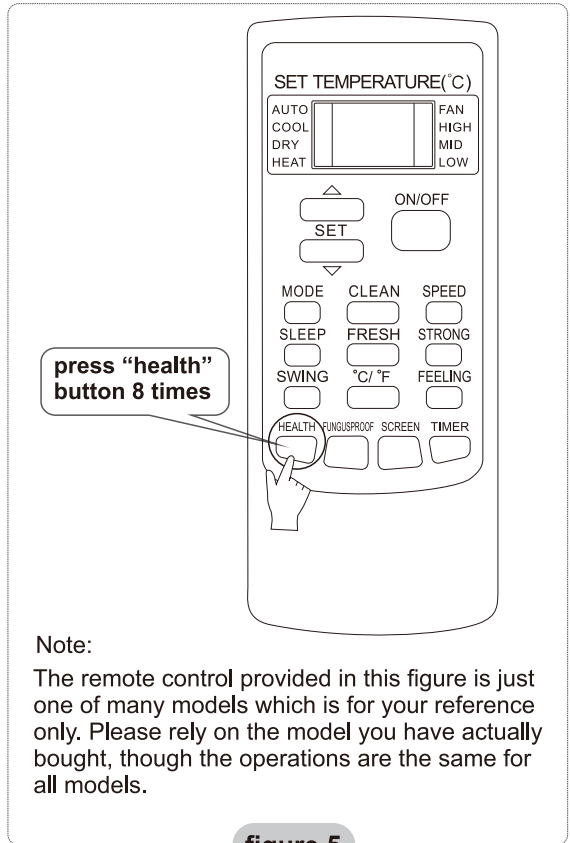
figure 4

Reset AC WI-FI module

In the case of first time configuration or after changing the connected wireless router is, the WI-FI module inside the air conditioner needs to be reset.

To reset the module:

Press the “HEALTH” key on the remote control for 8 times (see Fig.5) within 5 seconds after the air conditioner is turned on. The reset is not done until you hear two beeps of the buzzer.



Note:

The remote control provided in this figure is just one of many models which is for your reference only. Please rely on the model you have actually bought, though the operations are the same for all models.

figure 5

Smartphone ,pad or other mobile terminals connect to WIFI or hotspot

Activate the WI-FI function of the mobile terminal and connect it to a wireless router or an access point.

Note:

A wireless router is required for the WI-FI function to work. Please purchase one if you do not already have one.

Configure the Devices

After the control software is downloaded and installed on the mobile terminal, configure the AC devices according to the following figure.

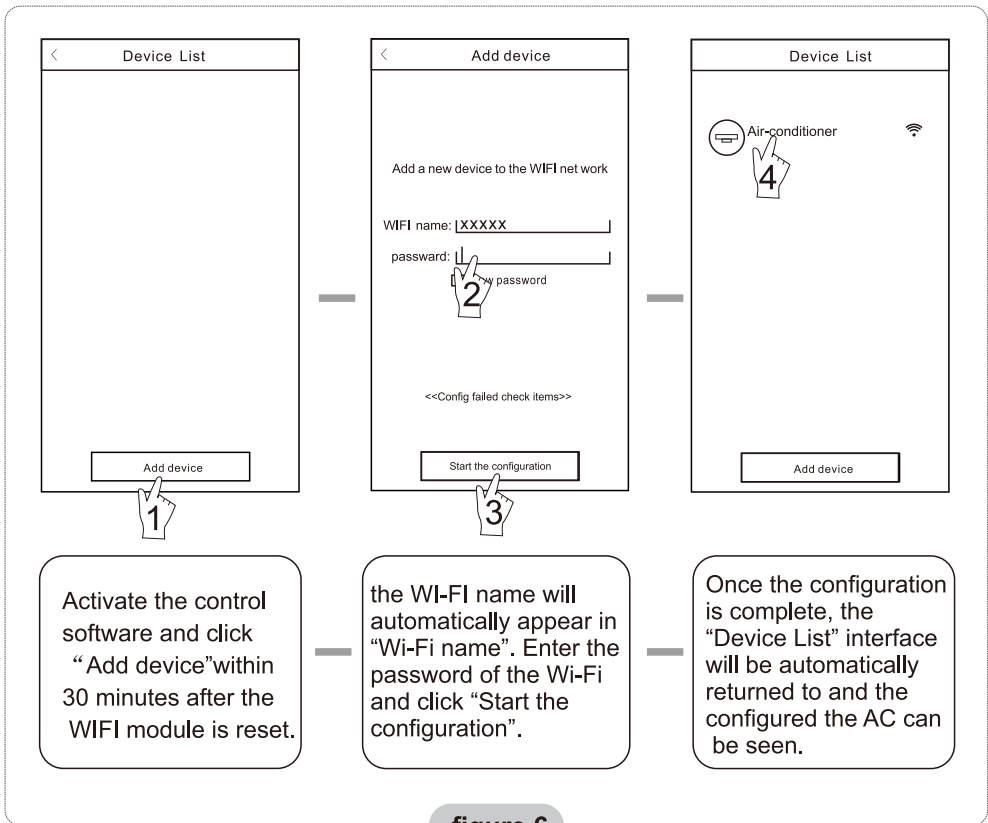


figure 6

Note: 1. In the case of first time configuration or after the connected wireless router or access point is changed, make sure the mobile terminal is already connected to the wireless router or access point to be paired with the WI-FI module.

2. If the configuration is failed, press "Config failed check items" to check the notes about the failure before reconfigure the AC.

After the configuration is successful, click the corresponding AC name to enter the control interface for further operation.

Manage the Devices

1. Modify and Lock the Devices

- ✦ In the “Device List” interface, press and hold for more than 0.5 second (for Android system)or press (for IOS system) the icon of an existing device to activate the “modify the name” interface.
- ✦ You can change the name or the icon, to identify different AC devices.
- ✦ To lock a device, simply touch the “Locking Device” icon. Once a device is locked, other users won't be able to search for it, thus preventing it from hostile control. After the configurations of the AC device names, icons and locking status are complete, touching “Save” will save and validate them.

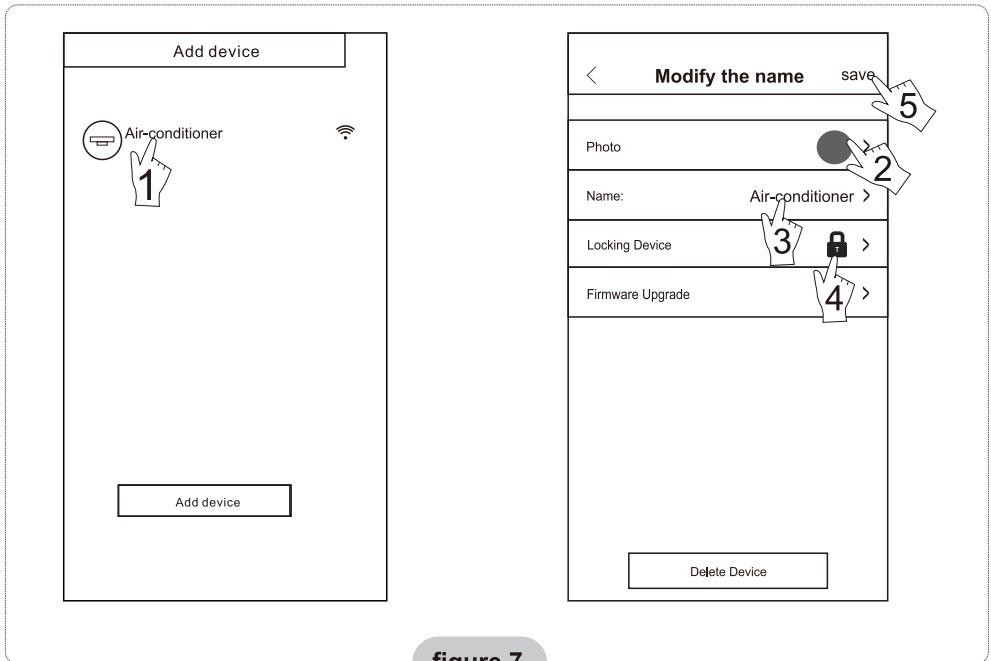


figure 7

2. Delete an AC under control

For Android: Click “Delete Device” button under “Modify the name” in Fig.7.
For IOS: Swipe over the AC name to the left under “Device List” and click “Delete”.

3. Remote control with wireless router

Once the wireless router is connected to the Internet, activating the GPRS on the mobile terminal will enable the remote control of the devices.

Others

1. The software provides help service through which the users may check the operational instructions of the software and other information.
2. Besides, as the operation interface and the function of the software is under constant improvement, we will keep you informed about the subsequent upgrades for your updating.
3. As the operation interface may change due to the constant version upgrading, the figures in this manual are for reference only, so please rely on the actual operation interface.

Appendix A: <<Config failed check items>>

1. Please check the Wi-Fi icon on the air conditioner panel, if the icon not display, please contact customer service.
2. Please make sure the mobile phone network under the current router WI-FI environment: Close the mobile phone 3G/4G data connection, to be connected to the router WI-FI pairing.
3. Please check whether the module reset successfully: Press the button health on the remote controller 8 times to reset, a "drip drip " sound said reset successfully.
4. Please check the Wi-Fi name of the router, recommended not contain spaces and other non-alphanumeric characters.
5. Please check the Wi-Fi password of the router, not allowed more than 32 bits, recommended not contain spaces and special symbols in addition to letters and numbers.
6. Please check whether the Wi-Fi password input is correct when APP configuration : you can check show password to confirm when input the WI-FI password.



WWW.DAIZUKI.COM